

State of Wyoming Corner Record

(In compliance with the CORNER PERPETUATION AND FILING ACT, Wyoming Statutes, 1977, Section 36-11-101, et. seq., and the Rules and Regulations of the Board of Registration for Professional Engineers and Professional Land Surveyors)

Reverse side of this form may be used if more space is needed.

Record of original survey and citation of source of historical information (if corner is lost or obliterated). Description of corner monumentation evidence found and/or monument and accessories established to perpetuate the location of this corner. Sketch of relative location of monument, accessories, and reference points with course and distance to adjacent corner(s) (if determined in this survey). Method and rationale for reestablishment of lost or obliterated corner.

G.L.O. Notes: U.S. Deputy Surveyor, Alfred M. Rogers, June 20, 1871; 80.00 Chains... Set a red sand stone 20 x 8 x 4 for corner to Sections 29, 30, 31 & 32;

Found: Nothing

Set: At the longitudinal centerline of Laramie County Road No. 143 surveyed circa 1928 and the latitudinal old section line fences east and west, I set a No. 5 x 24" rebar with a marked 2" Aluminum Cap approximately 0.05' below the asphaltic Laramie County Road No. 143. Set a p.k nail in the south face of a R.R. Tie fence corner post 47.34' West of the corner and a p.k nail in the north face of a R.R. Tie fence corner post 39.96' east of the corner.

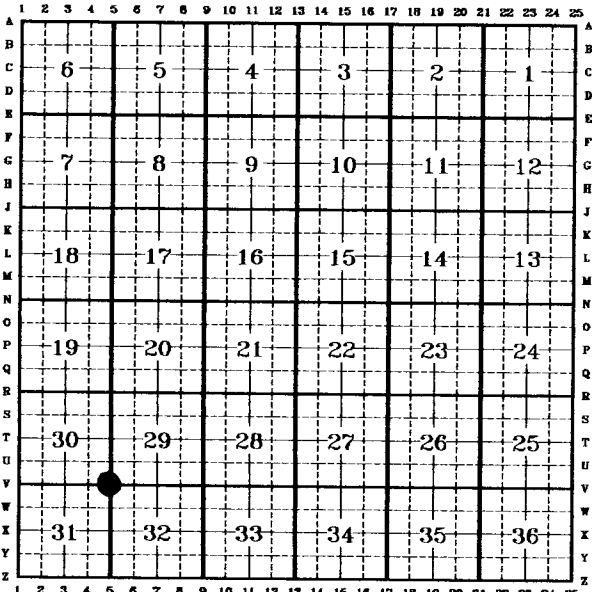
See back of this sheet for ties to adjacent monuments.

Aluminum Cap Markings
T.15N. R.63W.
S.30 | S.29
S.31 | S.32
1994
PLS 2927

20071A
LARAMIE COUNTY CLERK
CHEYENNE, WY.
97 APR 7 PM 4 41

Date of Field Work: 2, March, 1994 Office Reference: EXXON Looseleaf Pg. 57

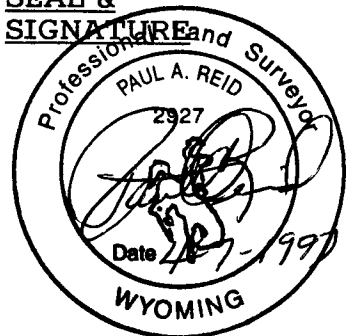
CROSS INDEX DIAGRAM



Firm/Agency, Address
Paul A. Reid, A.V.I.p.c.
2035 Westland Road
Cheyenne, WY 82001

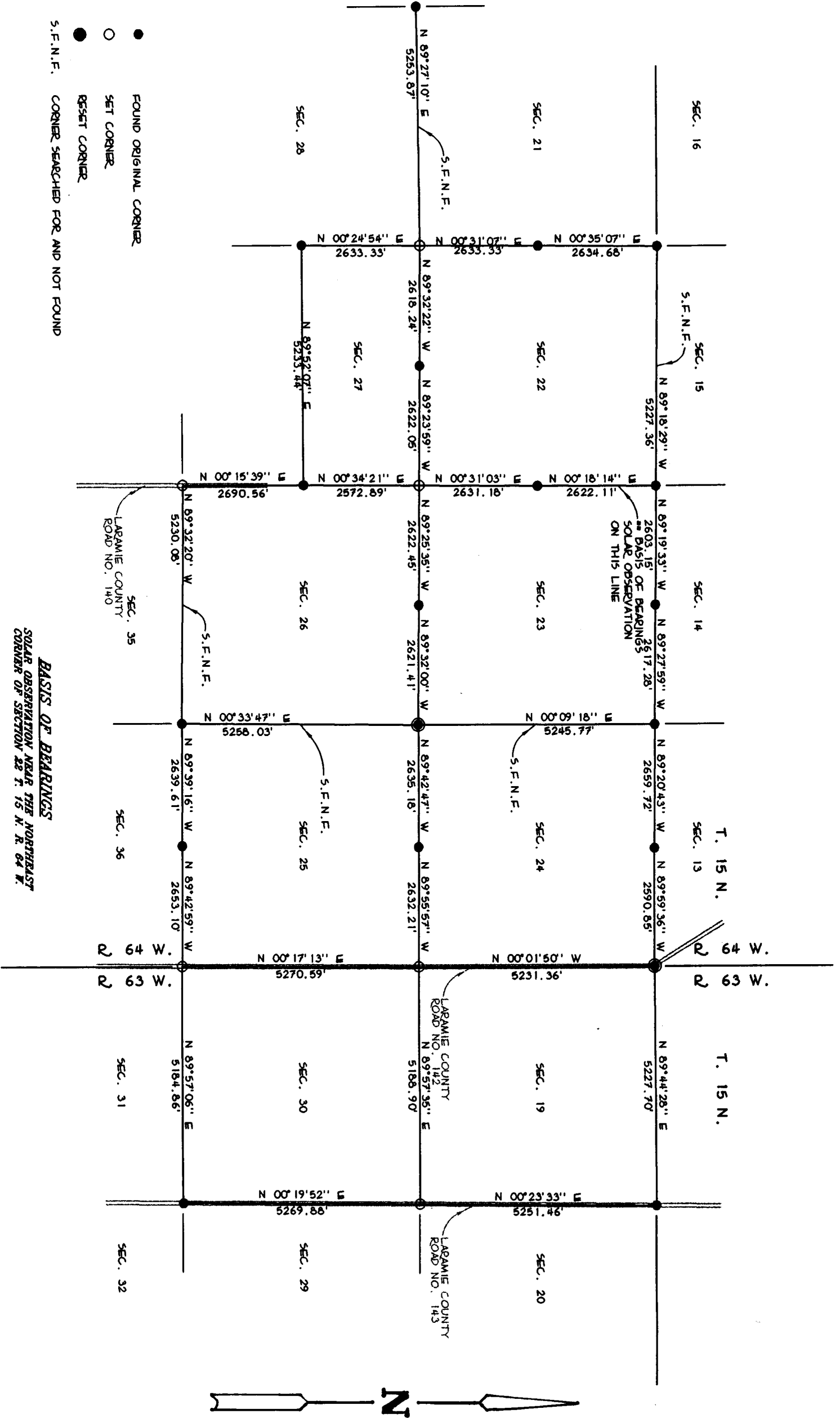
Telephone Number:
(307)-634-6017

This corner record was prepared by me or under my direction and supervision.
SEAL & SIGNATURE



Corner Name: NE Corner Section: 31 T 15N R 63W; 6TH P.M. Cross-Index No.: V-5

- FOUND ORIGINAL CORNER
- SET CORNER
- RESET CORNER
- S.F.N.F. CORNER SEARCHED FOR AND NOT FOUND



BASIS OF BEARINGS
 SOLAR OBSERVATION NEAR THE NORTHEAST
 CORNER OF SECTION 22 T. 15 N. R. 64 W.